

# Manually creating a .raw file for PLS-graph

James Gaskin

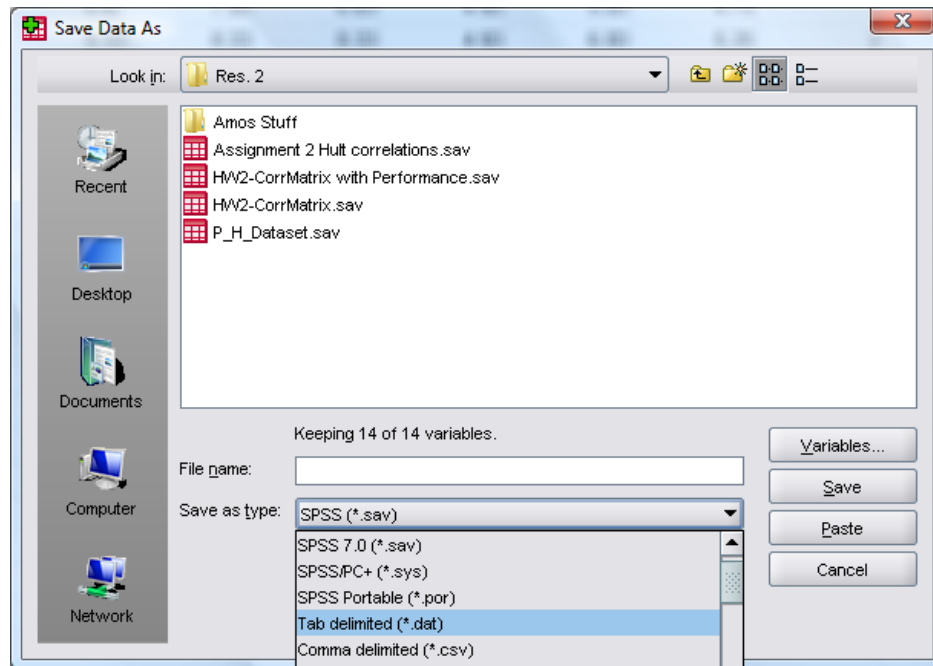
## Introduction

PLS-graph only accepts .raw data files, but no program known to man creates .raw files for data sets... So, we must trick our computer into thinking we have a .raw file. Here's how:

## Steps

**Step 1:** From SPSS go to File → Save As

- a. Save as a tab delimited .dat file



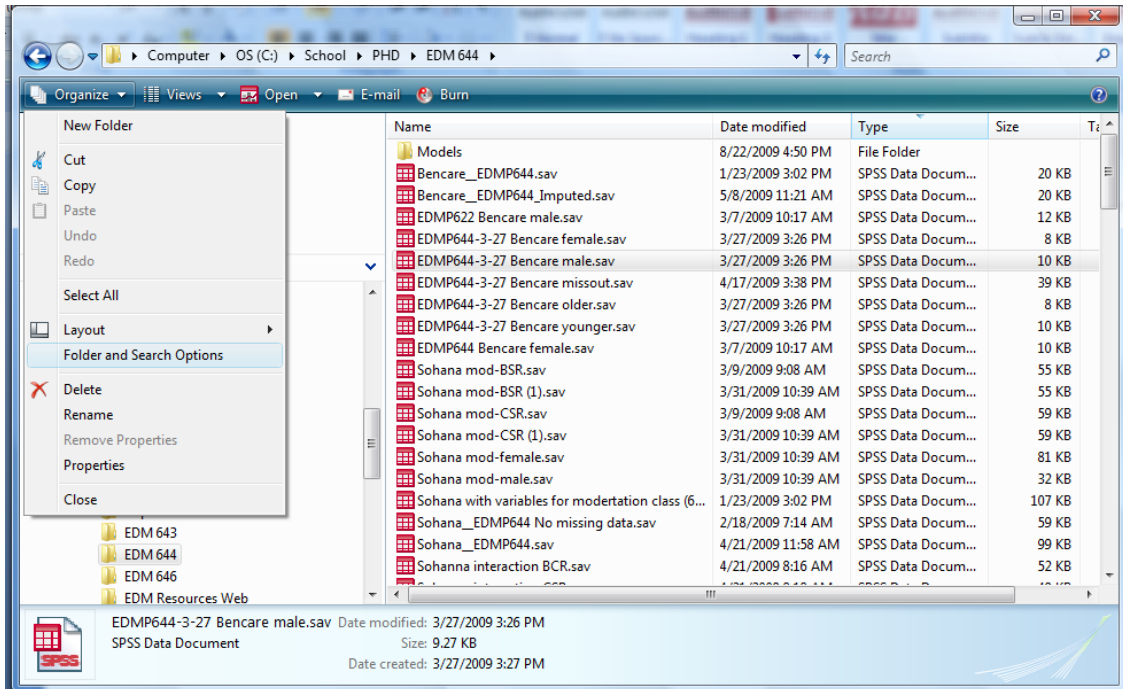
- 
- b. If in Excel, make sure the first row contains the variable names and then Save As tab delimited .txt file

**Step 2:** Find the .dat or .txt file you just saved.

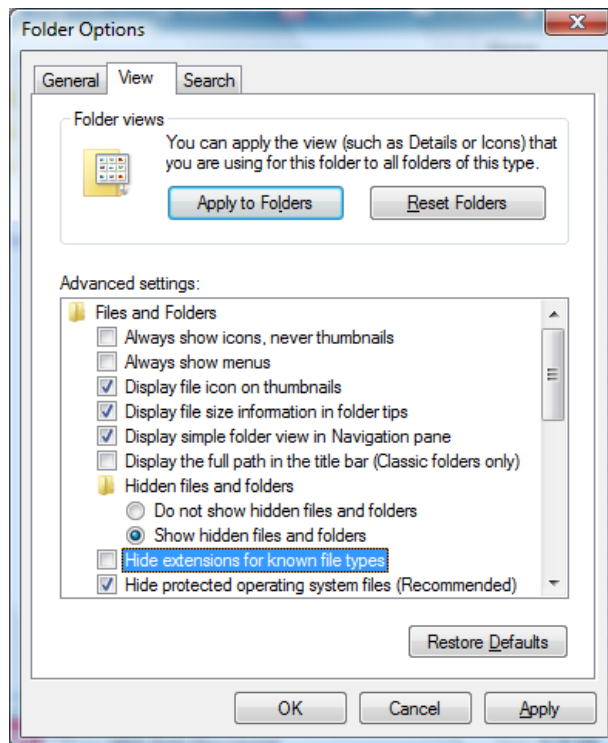
**Step 3:** If you can see the file extensions (like .dat or .txt) after each filename then skip this step and continue at

Step 4. If you can't see any file extensions, then you'll need to do the following:

- a. For Windows Vista Users
  - a. Look at the top left corner of the folder window, just below the address bar; click on Organize
  - b. Select Folder and Search Options



- c. Click on the View tab
- d. Find the Hide Extensions for Known File Types check box
- e. Make sure it is unchecked



- f. Hit OK
- g. You should now be able to see the file extensions of all the files in that folder.

**Step** 4: If you can see the file extension (".dat" or ".txt") then simply right click the file → Rename with a new file extension of ".raw".

- a. So, if my file was named JamesPLSDataSet.dat, it should now be named JamesPLSDataSet.raw
- b. You now have a legitimate .raw data set that can be linked in PLS-graph!