

Executive Summary

For my VBA project I have created a Family Finances program which is completely manipulated through the GUI. With this program you can

- Keep track of all your children's accounts (Savings, Spending, Tithing, Monthly Allowance)
- Create and update/maintain a family budget
- Query Child accounts
- Query your budget
- Create monthly reports for individual child accounts
- And create monthly budget reports.

This program is intended for family use, not for any business use. The program can handle up to 20,000 children and 20,000 budget categories!

Walkthrough

The screenshot shows the 'Family Finances' application window with a blue title bar and a close button. The main window has a menu bar with 'Edit Allowances', 'Edit Budget', 'Query Allowances', 'Query Budget', and 'Create Reports'. The 'Create New Child Account' dialog box is open, featuring a 'Type' section with radio buttons for 'Expense', 'Income', and 'Gift'. Below this is an 'Apply' button. The dialog also has a 'Create New Child Account' section with fields for 'Child's First Name' and 'Monthly Allowance', and an 'Initial Account Balances' section with fields for 'Spending Account', 'Savings Account', and 'Tithing'. An 'Add Account' button is at the bottom of the dialog. The main window has three buttons at the bottom: 'Advanced', 'Save', and 'Close'.

Above is the initial screen at start-up. From here you can enter expenses, incomes, or gifts for a particular child, specifying the amount and a description as well as a date. You can also create a new child account specifying a monthly allowance and initial account balances.

From any tab you can

- Go to the Advanced Settings window
- Browse the other tabs
- Save and Close

The screenshot shows the 'Family Finances' application window. The 'Edit Budget' tab is active. The interface includes a top navigation bar with tabs for 'Edit Allowances', 'Edit Budget', 'Query Allowances', 'Query Budget', and 'Create Reports'. The main workspace is divided into several sections. At the top, there are input fields for 'Category:', 'Add Amount:', 'Description:', and 'Date:'. Below these is an 'Apply' button. In the center, there are two buttons: 'Create New Budget Category' and 'Edit Budget Name & Amount'. Below these are two panels. The left panel, titled 'Create New Category', has fields for 'Category Name:' and 'Budgeted Amount:', with a 'Create' button. The right panel, titled 'Edit Budget Name & Amount', has fields for 'Category:', 'Change Name To:', 'Budgeted Amount: --', and 'Changed Amount To:', with an 'Apply Changes' button. At the bottom of the window are three buttons: 'Advanced', 'Save', and 'Close'.

This is the Edit Budget tab. From here you can create a new budget category specifying a name and amount to budget. You can also edit existing budget category names and amounts (I find this useful as we will sometimes create a temporary category like "Christmas" or "Vacation"). The primary purpose of this tab is to allow you to update existing budget categories by adding expenses to them.

Family Finances

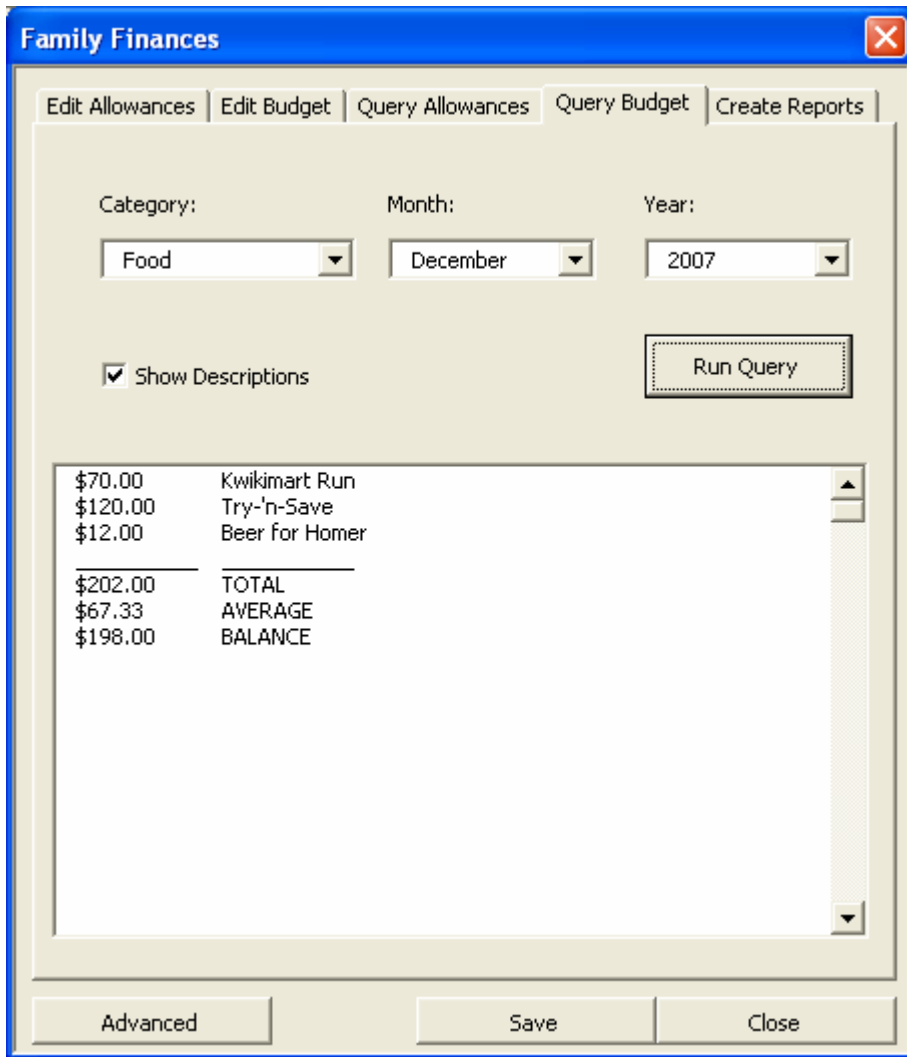
Edit Allowances | Edit Budget | **Query Allowances** | Query Budget | Create Reports

Child: Month: Year:

Include: Expenses Show Descriptions
 Income
 Gifts

Expense	\$0.50	Butterfinger
Expense	\$1.19	Squishy
Expense	\$40.00	Skateboard
Expense	\$12.00	Slingshot
Expense	\$0.50	Candy Bar
Expense	\$1.19	Squishy
Expense	\$40.00	Fake Drivers License
Expense	\$12.00	Candy Splurge
Income	\$10.00	Mowed Flanders Lawn
Gift	\$20.00	Birthday gift from Grandpa

This is the Query Allowances tab. This tab allows you to select a child account and query the expenses, income, and or gifts including or excluding descriptions for any or all months during any of the past three years, including the current year.



The Query Budget tab allows you to select a budget category and query it for a specific month or all months for any of the past three years including the current year. The display will show the amount and the description if you desire, the total expenditure, average expenditure, and, if you have not selected all months, the balance in the category for that month.

Family Finances

Edit Allowances | Edit Budget | Query Allowances | Query Budget | **Create Reports**

Monthly Allowance Report

Child: Month: Year:

Create Allowance Report

Monthly Budget Report

Month: Year:

Create Budget Report

Advanced | Save | Close

The create reports tab allows you to create monthly allowance and budget reports. These reports go through your allowance or budget data and compile useful information for the specified month. Displays of these reports are shown below.

Microsoft Excel - FamilyFinances.xls

File Edit View Insert Format Tools Data Window Help

Type a question for help

Family Finances

Edit Allowances | Edit Budget | Query Allowances | Query Budget | Create Reports

Lisa's Allowance Report -- December 2007

Monthly Allowance	\$10.00
Current Spending	\$45.78
Current Savings	\$230.65
Total Income	\$0.00
Total Expenditures	\$1.69
Total Gifts	\$0.00
Tithing for December	\$0.00

Child: Lisa Month: December Year: 2007

Create Allowance Report

Monthly Budget Report

Month: Year:

Create Budget Report

Advanced Save Close

Ready

start

Inbox - Microso... kwiki mart squis... Untitled page - ... Microsoft Excel ... 10:31 AM

Microsoft Excel - FamilyFinances.xls

File Edit View Insert Format Tools Data Window Help

Type a question for help

Security...

	A	B	C	D	E	F	G
1	Budget Report for December 2007						
2							
3							
4		Category	Limit	Spent	Balance	Average Payment	
5		Food	\$400.00	\$202.00	\$198.00	\$67.33	
6		Mortgage	\$1,200.00	\$1,200.00	\$0.00	\$1,200.00	
7		Fuel	\$200.00	\$203.00	(\$3.00)	\$67.67	
8		Utilities	\$30.00	\$34.00	(\$4.00)	\$34.00	
9		Fun	\$100.00	\$94.87	\$5.13	\$31.62	
10		TOTAL	\$1,930.00	\$1,733.87	\$196.13		
11							
12							
13							
14							
15							
16							
17							
18							
19							
20							
21							
22							
23							
24							
25							
26							
27							
28							
29							
30							
31							

Family Finances

Edit Allowances | Edit Budget | Query Allowances | Query Budget | Create Reports

Monthly Allowance Report

Child: Month: Year:

Monthly Budget Report

Month: Year:

December 2007 / Lisa's Report / Home /

Draw | AutoShapes

Ready

start | Inbox - Microso... | kwiki mart squis... | Untitled page - ... | Microsoft Excel ... | 10:31 AM

Advanced Settings

Set percentage of income to be allocated to each account.

Savings: Spending: Tithing:

Tithe on Gifts

Change monthly allowance amount.

Child: Changed Amount To:

Remove budget category:

This is the Advanced Settings window. From here you can change the percent of income allocated to each of the three accounts. Naturally, one would not change the tithing allocation, so you only need to specify the allocation for the savings account, and then the spending allocation will be calculated for you.

You can also choose whether or not you would like tithing to be paid on gifts (some people do it differently).

When a child has become more useful or if for any reason you feel the child's monthly allowance deserves and increase (or decrease) it can be adjusted from here.

You can also remove a budget category (like the "Christmas" category) after it has fulfilled its useful life.

What did I learn?

I learned a whole heap of stuff as I relentlessly programmed this project. Mainly, I learned how to program in VBA! This program is 1156 lines of code! That means that even if I didn't work smart, I did work hard.

I learned how to find answers to my problems using the internet. Someone has always done it. You can nearly always find what you need online.

I also learned that I like programming in VBA a lot more than I like programming in java. It's just easier. It's also a lot more fun.

Was there anything I couldn't get to work? Yes, but that's just because I didn't want to go back and rewrite my code. The Redim wasn't working on my arrays, so they are initiated with 1000 rows, but can't be redimmed to fit their content. I could have fixed this by kicking my computer a couple of times or by writing all of my data to a range and then using the range to fill the list I was filling with the array. I didn't make this change because I didn't see it as a huge flaw and it would have required me to go back and change a bunch of code.

Was there anything that gave me trouble but I still got to work? Yes, applying monthly allowances automatically but not repeating allowance posts. This took me a while to figure out because I was trying to do it with persistent/static variables, but they weren't persisting. So, I just wrote the variable value to a range instead (and the range persists as long as you save the workbook). So it works just fine now.